



# Opening Remarks

## OPC Symposium on Climate Change and Health

Dr. Claudia Hitaj

7 July 2027





Wenn Hitze zur Gefahr wird Leitartikel

## Urbanistische Fehler machen die Hauptstadt zu einem Backofen

Extreme heat

Germany, Czechia, Poland and Hungary swelter through hottest days on record

Heat records of over 40C set as extreme weather spreads east, with more than 191m in Europe enduring 35C or above



Stämm vum Dag

Jürgen Junk, müssen wir uns künftig auf mehr Hitzewellen gefasst machen?

## European soccer fans enjoy a brief fling with America's air-conditioned culture

Despite a deadly heat wave at home, many say they won't permanently embrace Americans' electricity-guzzling amenity.

Technik streikt wegen Hitze

# Schwimmbad Grevenmacher geschlossen: Jetzt muss das Wasser abkühlen

Wegen zu hoher Wassertemperaturen kann das Schwimmbad mindestens zwei Tage nicht öffnen. Die Technik kam mit der extremen Hitze nicht zurecht.

Sinkende Pegel

## Wasserkraft in Luxemburg: In der Hitze versiegt der Strom

Die anhaltende Hitze drückt die Pegel von Mosel und Sauer. Das trifft die Wasserkraftwerke. Sie liefern weniger Strom, das setzt die Betreiber wirtschaftlich unter Druck.

28.06.2026

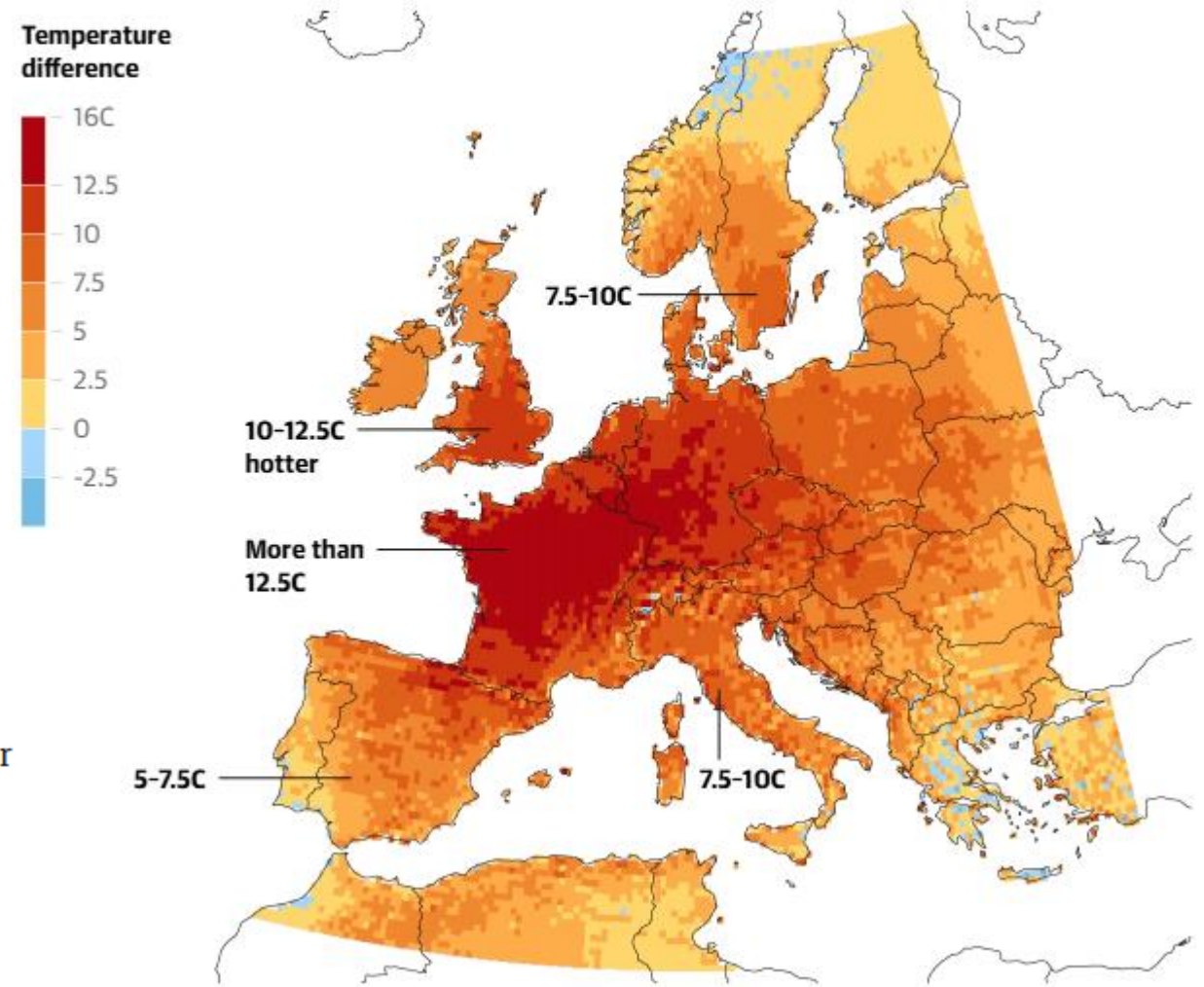
# European heatwave is worst ever and impossible without climate crisis, scientists say

Study also finds high humidity means people in hundreds of cities are enduring their worst ever heat stress

When scientists finish their calculations, the death toll will probably number in the thousands. Spain, one of the few countries that produces **real-time statistics** on excess deaths linked to heat, has recorded more than 100 per day since Wednesday. French authorities said that at least 1,000 additional deaths had been recorded between 24 and 27 June, a figure that is likely to rise. They include **four toddlers** who died in incidents linked to the heat. A three-year-old boy in a Paris suburb was found dead last week after climbing into a car and becoming trapped.

This week's maximum temperatures have been far above seasonal averages

Average daily max temperature, 22-28 Jun 2026 relative to a 1991-2020 baseline



Guardian graphic. Source: ERA5, World Weather Attribution

07:28



←  LU-Alert

No action required / Aucune action  
requis / Keine Handlung erforderlich  
Infos : [website lu-alert](#)

Monday, Sep 8 • 18:07

Avis de pluie / Danger d'inondations  
Rain warning / Flood hazard  
Regenwarnung / Hochwassergefahr  
08/09 22h00 - 09/09 12h00  
Details: [website lu-alert](#)

Saturday, Mar 28 • 18:12

Sending with [POST](#)

Unread

Monday, Jun 22 • 16:17

Canicule, protégez-vous!  
Heatwave, protect yourself!  
Hitzewelle, schützen Sie sich!

Details: [website lu-alert](#)

16:17

Sender can't accept replies. Contact them  
directly. [Learn more](#)



**LU-Alert**  
**06/07/2026 11:00**

TEST TEST TEST  
This is a test message from the  
national warn and information  
system LU-Alert. No action is  
required on your part. In the event of  
real danger, you would have received  
a message like:

Flash flood in Luxembourg  
Instructions to follow:  
Take shelter by going upstairs.  
Avoid the area.  
Keep the way clear for emergency  
vehicles.  
For more information, visit the  
[lu-alert website](#).

OK (1/2)



**LU-Alert**  
**06/07/2026 11:00**

TEST TEST TEST  
Ceci est un message test du  
système national d'alerte et  
d'information LU-Alert. Aucune  
action n'est requise de votre part. En  
cas de danger réel, vous auriez reçu  
un message tel que:

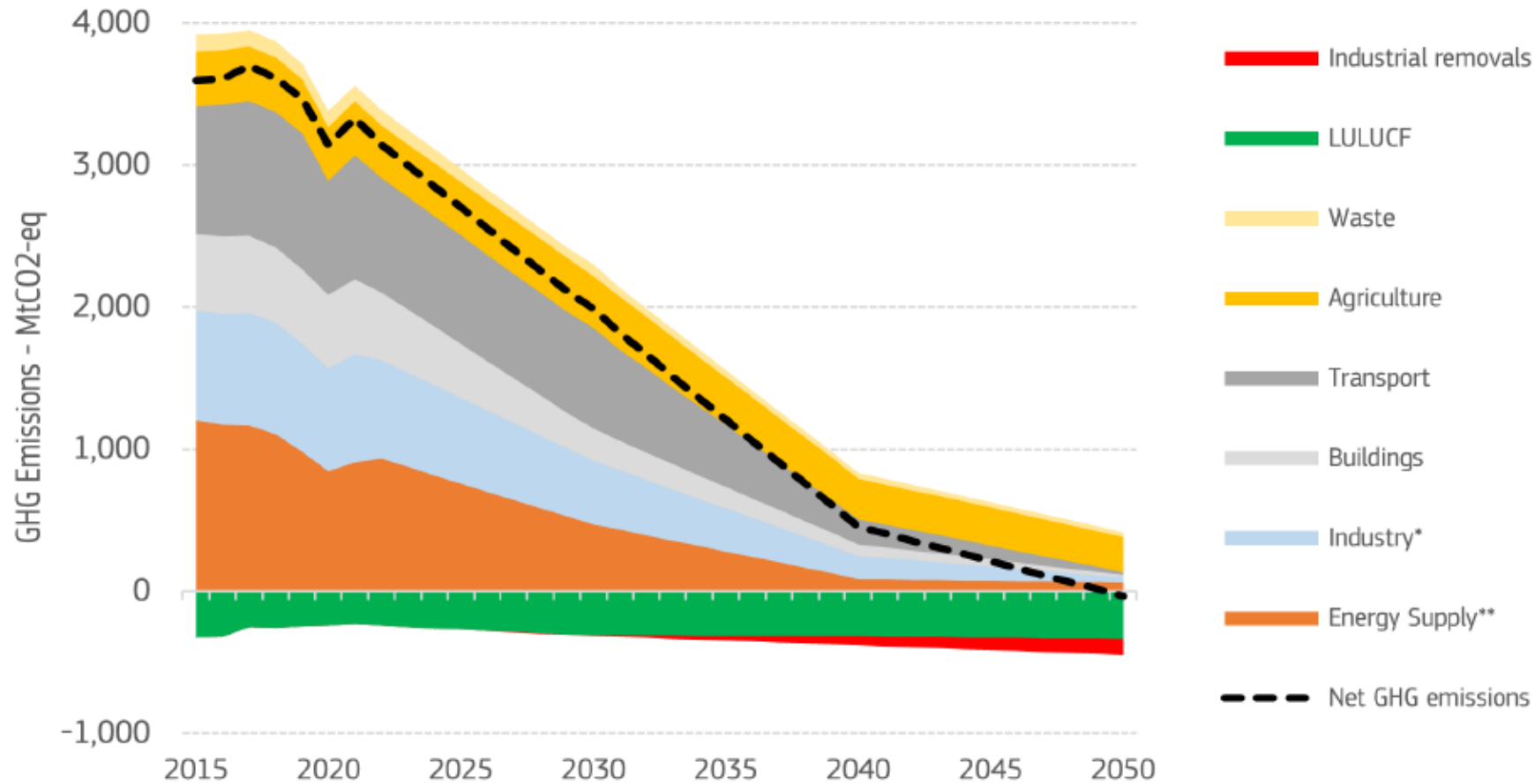
Crue subite/flashflood au  
Luxembourg  
Consignes à respecter :  
Mettez-vous à l'abri en montant aux  
étages.  
Évitez le secteur.  
Laissez la voie libre aux véhicules  
d'urgence.  
Pour plus d'informations, veuillez  
vous rendre sur le site [lu-alert](#).

OK



# EU Projections

Historical and projected sectoral greenhouse gas emissions in the period 2015-2050 (EU)



\*Excluding non-BECCS industrial removals

\*\*Including bioenergy with carbon capture and storage (BECCS)

- Residual unavoidable emissions
- ➔ Need for carbon dioxide removal
- In addition to mitigation measures, which are a priority



## EU climate target for 2040: –90% net GHG emissions vs 1990

**Purpose:** pathway to climate neutrality by 2050 (ESABCC called for a reduction of 90-95%)

### **Agreement:**

- domestic reductions around 85%
- up to 5% international credits (“From 2036 onwards, **high-quality international credits** may be used **up to a limit of 5%** of 1990 EU net emissions”)

**EU Council** formally adopted the amended **European climate law**, introducing a binding intermediate climate target, for 2040, of a **90% reduction in net greenhouse gas (GHG) emissions** compared to 1990 levels.



- Luxembourg Climate Law (December 2020) and related sectoral targets for 5 non-ETS sectors (June 2022)
- Long-Term Strategy (published Oct 2021)
- NECP 2021-2030 update (published July 2024)
- CCUS & CDR Roadmap (published December 2025)
- Update of Adaptation Strategy 2025-2035 (public consultation finished)
- Social Climate Plan (public consultation finished)

-55% GHG  
emissions by 2030  
compared to 2005

Climate neutrality  
by 2050



# Future National Plans and Objectives

**Draft NECP 2031-2040 due on 1 January 2028 (Final version by 1 Jan 2029)**

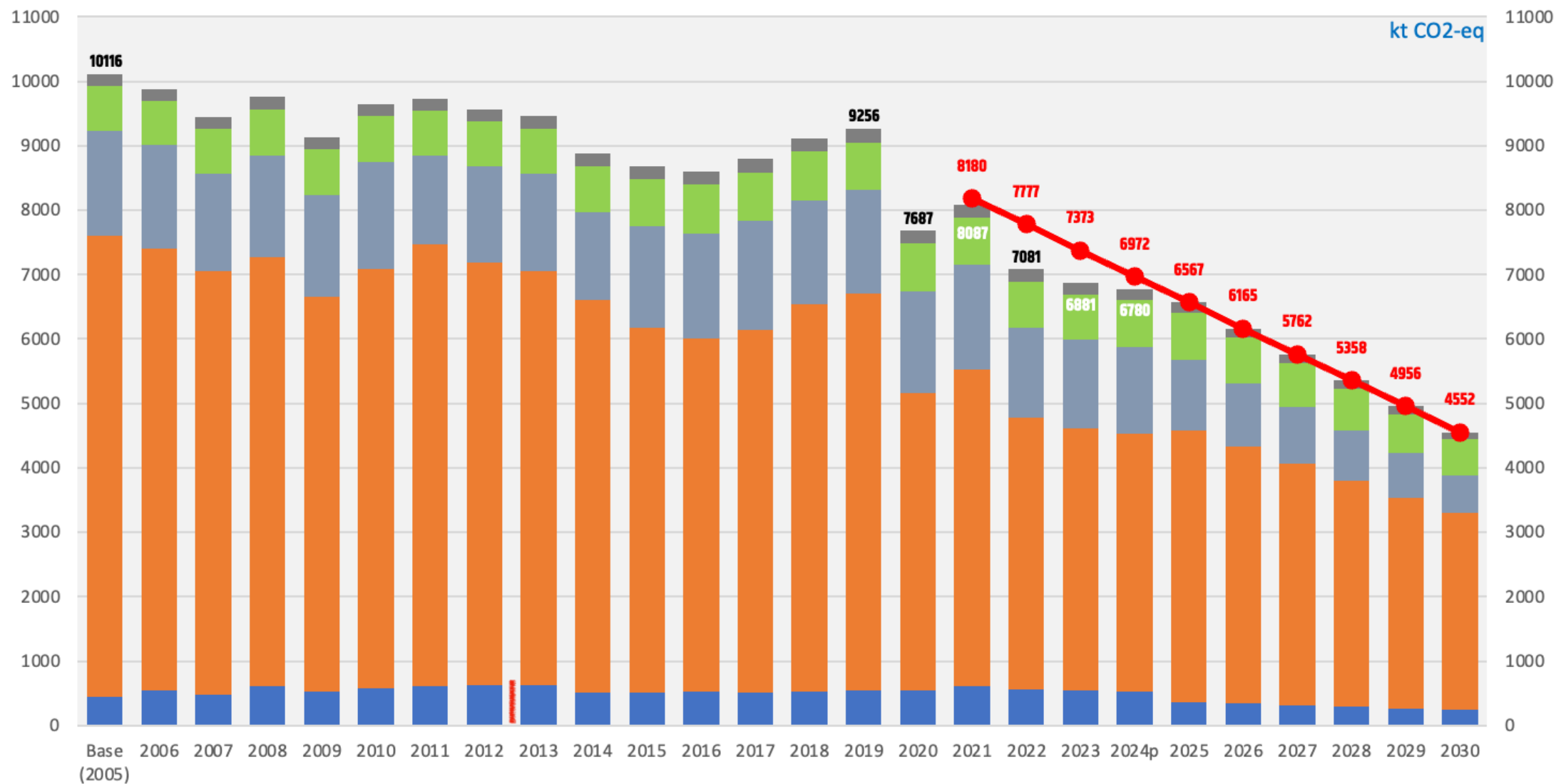
**Updated Long Term Strategy (for 2060) due on 1 January 2029 containing:**

- Total GHG emission reductions and enhancements of removals by sinks;
- Renewable energy, including share of RES in the final energy consumption by 2050;
- Energy Efficiency, including an estimate of likely energy consumption by 2050;
- Sector-specific related content—expected emissions and decarbonization options in different sectors, including: energy, industry, buildings, heating and cooling, transport, agriculture, waste, land-use, and forestry
- Financing;
- Assessment of the socio-economic impacts of the decarbonization measures.

EU level:  
-90% by 2040  
compared to  
1990

# GHG emissions according to Luxembourg Climate Law

(2005-2023: historical emissions; 2024: provisional data; 2025-2030: emissions budgets)



- Energy and manufacturing industries, construction - excl. ETS
- Transport
- Residential and tertiary buildings
- Agriculture and forestry
- Waste and wastewater treatment
- Constraint -55% Luxembourg Climate Law to be met



## **Forest now a net source of CO2 emissions**

Between 2010 and 2023, Luxembourg's forests emitted more carbon than they absorbed, becoming a net source of CO2 emissions due to climate damage and the harvesting of spruce stands infested with bark beetles.

## **Population growth**

## **Ensuring a just and orderly transition**

## **Scaling up CCUS and carbon dioxide removals (CDR)**

# Strategy and action plan for adaptation to the effects of climate change

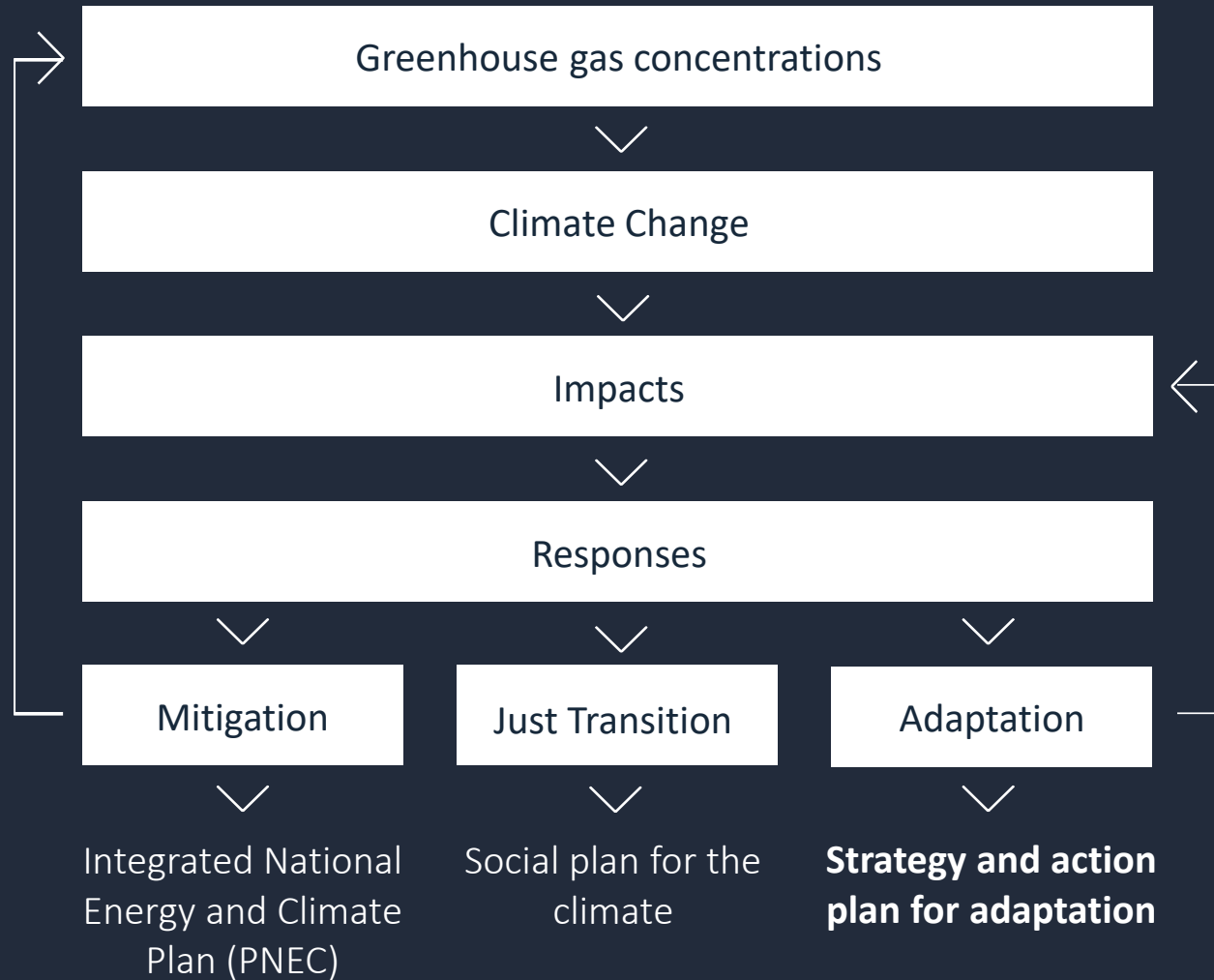
OPC Climate Change and Health

Neimënster Abbey, 07.07.2026



LE GOUVERNEMENT  
DU GRAND-DUCHÉ DE LUXEMBOURG  
Ministère de l'Environnement, du Climat  
et de la Biodiversité







Projet de stratégie nationale pour la résilience dans le domaine de l'eau



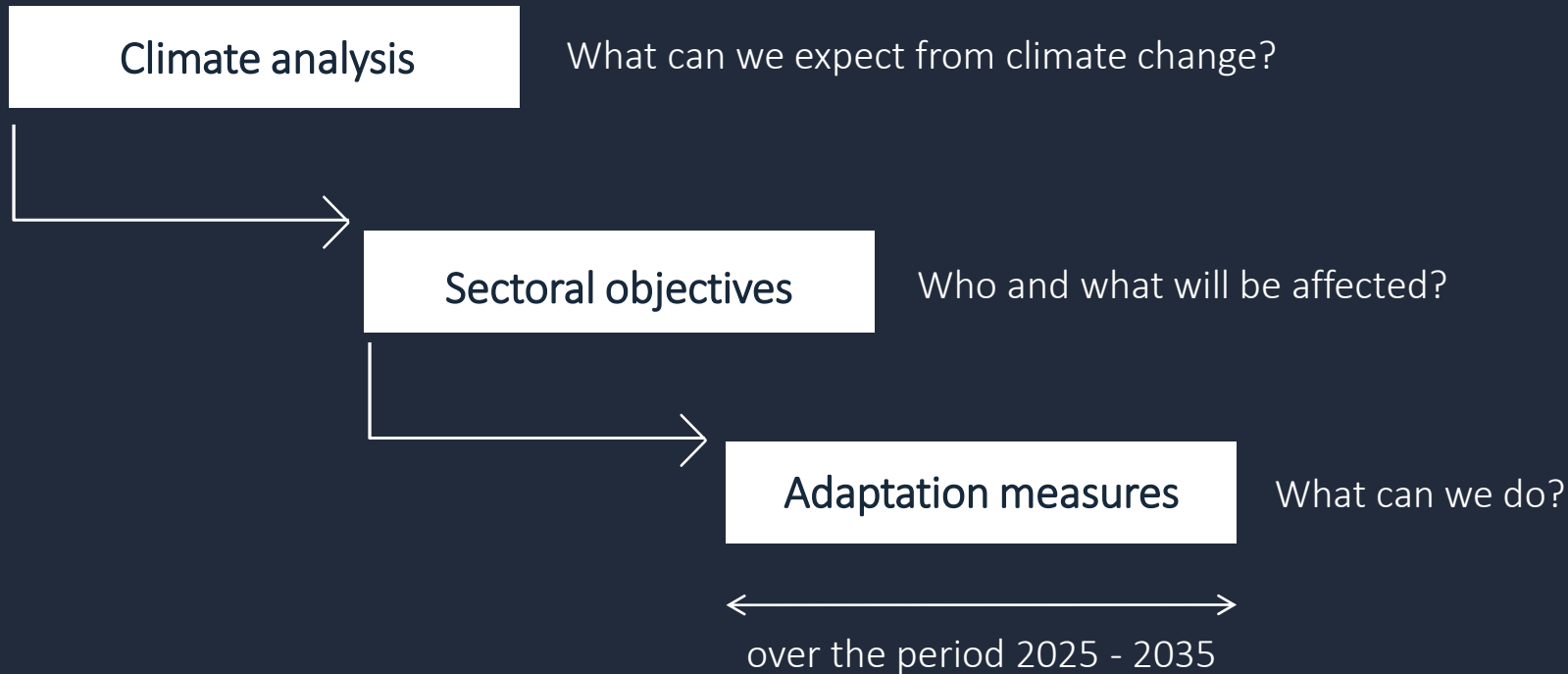
© AGE

Renaturierungsdösch –  
Gruppen de travaux et  
plan d'action



# The strategy and action plan for adaptation

## A clear structure centred on three key questions:





A **holistic** and **interdisciplinary approach**, made possible by collaboration across all relevant sectors:

+ 500

**participants** in the thematic  
workshops and public  
information sessions

+ 160

**organisations**  
**administrations**  
**businesses**

+ 250

proposed **textual**  
**amendments**

+ 100

suggestions for **new**  
**measures**



## An action plan with **152 concrete measures**, **10** of which relate to human health

### 17 areas of action:

- 4.1 Crisis and natural disaster management
- 4.2 Human health**
- 4.3 Water
- 4.4 Society
- 4.5 Urban areas
- 4.6 Spatial planning
- 4.7 Housing and construction
- 4.8 Transport
- 4.9 Economy and finance
- 4.10 Energy
- 4.11 Soil protection
- 4.12 Forestry and afforestation
- 4.13 Agriculture, food and viticulture
- 4.14 Biodiversity and ecosystems
- 4.15 Regional and international cooperation
- 4.16 Communication and awareness-raising
- 4.17 Education



Elo handele fir  
e bessert Liewen



Thank you for your  
attention!



LE GOUVERNEMENT  
DU GRAND-DUCHÉ DE LUXEMBOURG  
Ministère de l'Environnement, du Climat  
et de la Biodiversité